

## **REQUEST FOR PROPOSALS (RFP)**

**Climbing Escalade Canada**

**Competition Seasons 2025-2026 & 2026-2027**



## TABLE OF CONTENTS

---

TABLE OF CONTENTS .....	2
INTRODUCTION.....	3
TIMELINE.....	3
CONTACT.....	3
SCHEDULING GUIDING PRINCIPLES .....	4
PROPOSED 2025–2026 and 2026-2027 SEASON CALENDARS .....	6
HOSTING REQUIREMENTS - TECHNICAL REQUIREMENTS.....	7
HOSTING REQUIREMENTS - VENUE REQUIREMENTS.....	10
CEC & HOST RESPONSIBILITIES .....	11
FINANCIAL STRUCTURE OF CEC EVENTS .....	13
BID REQUIREMENTS.....	14
BID EVALUATION CRITERIA .....	14



## INTRODUCTION

---

[Climbing Escalade Canada](#) (CEC) is the National Sport Organization for the sports of competition climbing and para-climbing. CEC governs the climbing disciplines of Boulder, Lead, Speed, and Top Rope.

CEC's purpose is to promote and develop competition climbing in Canada—both for athletes and the extended climbing community. We strive to enable athletes to achieve their high-performance potential in an ethical, equitable, and equal competition environment. We value community, transparency, integrity, inclusion, an athlete-centered approach, and the pursuit of excellence. More detail on CEC policies and governance can be found [here](#).

CEC is seeking facilities to host competitions for the 2025–2026 and the 2026-2027 Competition Seasons. This Request for Proposal (RFP) details the event calendar, host facility requirements and responsibilities, selection timeline, and evaluation criteria.

Interested facilities must submit their proposals to [info@climbingcanada.ca](mailto:info@climbingcanada.ca) by **11:59 pm EST, March 31, 2025**.

The CEC Board of Directors has final authority over all CEC events and any policies pertaining to those events. CEC has defined the schedule according to which events will occur, including the number of events in each discipline. CEC reserves the right to cancel or modify events according to the conditions set out in the event agreement signed by Event Hosts upon acceptance of the event.

Athletes and coaches participating in CEC events should refer to the [CEC Rules and Policies](#).

## TIMELINE

---

CEC will accept and review proposals and select the Host Facilities for the 2025–2026 and the 2026-2027 Competition Seasons according to the timeline below.

February, 2025	Bids can be submitted
March 31, 2025	Deadline to submit bids to <a href="mailto:info@climbingcanada.ca">info@climbingcanada.ca</a>
April 2025	CEC Committees to review proposals and submit recommendation to CEC Board of Directors
May 2025	CEC Board of Directors to select Event Hosts for 2025–2026 and 2026-2027 Competition Seasons
Early June 2025	Announcement of selected Hosts

## CONTACT

---

For questions or comments regarding this RFP, please contact CEC's Executive Director, Christiane Marceau, at [ed@climbingcanada.ca](mailto:ed@climbingcanada.ca)

Proposals must be submitted to [info@climbingcanada.ca](mailto:info@climbingcanada.ca)



## SCHEDULING GUIDING PRINCIPLES

---

CEC will use the following guiding principles when creating the schedule for a competition season. These are not specific rules or policies; rather, these are the guidelines that CEC will endeavour to satisfy when crafting a competition schedule. In some cases, it will be impossible to satisfy all of the guiding principles. Should that occur, CEC will endeavour to strike a reasonable balance between the guiding principles.

### Integration with International Sport Climbing

To ensure alignment with the International Federation, CEC will endeavour to

- align with the IFSC schedule and requirements
- align with the Olympic format and cycle:
  - LA 2028: TBD (hoping for all 3 disciplines)
  - LA 2028: Paralympic Games Inclusion

### Accessibility and Opportunity

To enable athletes across Canada in all categories to flourish, CEC will endeavour to

- offer opportunities in all three disciplines (Boulder, Lead, and Speed)
- offer national opportunities for Youth B, Youth A, Junior, and Senior
- offer regional opportunities for Youth C, Youth B, and Youth A
- support the development and growth of climbing in all Canadian markets
- keep events accessible, including by alternating Nationals between East and West

### Athlete-Centered

To provide athletes with the best possible competition experience, CEC will endeavour to

- minimize travel requirements
- provide adequate lead time for travel bookings
- minimize competition costs to athletes
- provide a selection process for the High Performance Program and Youth World Championships
- avoid holding competitions on weekdays when possible

### Follow Long Term Development (LTD) Principles

In support of appropriate and effective long-term development of our athletes, we will endeavour to

- encourage and support participation of athletes across all three disciplines until athletes reach the Senior level, recognizing that climbing is a late-specialization sport
- ensure competitions are planned and run with the specific athlete audience in mind based on the long-term development pathway
- support athletes' periodization of training vs. competition ratio

### Partnership with Event Hosts

Recognizing the importance of Event Hosts to a successful competition season, CEC will endeavour to:

- minimize expenses to Event Hosts
- minimize logistic requirements for Event Hosts
- maximize potential revenue through public and local grants
- work with Event Hosts to support growth of Canadian climbing facilities
- avoid scheduling competitions in busier and more profitable times of year



**Support for CEC Members and Stakeholders**

To provide support and clarity to all our stakeholders, CEC will endeavour to

- schedule events two years in advance
- listen to stakeholder input
- support selection process with clear qualification pathways
- support innovative ideas and solutions



## PROPOSED 2025–2026 and 2026-2027 SEASON CALENDARS

This RFP covers CEC Events for the 2025–2026 and the 2026-2027 Competition Seasons. CEC is looking for Event Hosts for the following preferred dates and locations. Interested facilities can submit bids for events that do not align with the preferred dates/locations below, but bids aligned with the below will be preferred.

	PREFERRED DATES	PREFERRED LOCATION	PREFERRED DATES	PREFERRED LOCATION
Speed National Championships & Development Camp	Nov 29-30, 2025	WEST	Nov 28-29, 2026	EAST
Para-Climbing National Championships	February 7-8, 2026	EAST	February 6-7, 2027	EAST
Senior Boulder National Championships	February 13-14, 2026	WEST	February 12-13, 2027	EAST
Senior Lead National Championships	February 16-17, 2026	WEST	February 15-16, 2027	EAST
Canada Games <sup>1</sup>			Feb 27-Mar 14, 2027	Québec City
HP Competition <sup>2</sup>	March 20-23, 2026	Oval	March 19-22, 2027	TBD
Youth Boulder Regionals (2 events)	April 18-19, 2026	WEST/EAST	April 17-18, 2027	WEST/EAST
NACS Boulder <sup>3</sup>	May 2-3, 2026	TBD	May 1-2, 2027	TBD
Youth Boulder National Championships	May 14-16, 2026	EAST	May 20-22, 2027	WEST
Youth Lead National Championships	May 18-19, 2026	EAST	May 24-25, 2027	WEST
NACS Lead & Speed <sup>4</sup>	June 20-21, 2026	TBD	June 19-20, 2027	TBD

<sup>1</sup> Not included in this RFP. For reference only.

<sup>2</sup> Not included in this RFP. For reference only.

<sup>3</sup> Not included in this RFP. For reference only.

<sup>4</sup> Not included in this RFP. For reference only.



## HOSTING REQUIREMENTS - TECHNICAL REQUIREMENTS

Prospective hosts should describe how their facilities satisfy the technical requirements below.

EVENT	CATEGORIES	FORMAT <i>(Subject to change)</i>	TECHNICAL REQUIREMENTS
<b>Speed National Championships &amp; Development Camp</b>	Senior Women Senior Men Junior Women Junior Men Youth A Women Youth A Men Youth B Women Youth B Men	<i>Speed Format</i> <ul style="list-style-type: none"> <li>2 practice runs in the same running order as qualifiers</li> <li>2 qualifier runs – Timed</li> <li>Top 16 – head-to-head single knock-out</li> </ul>	<i>Speed Requirements</i> <ul style="list-style-type: none"> <li>A 15m Speed wall compliant with <a href="#">IFSC Speed Wall Requirements</a></li> <li><a href="#">IFSC certified holds</a> (stamps and serial numbers present)</li> <li>Holds must be in “new” or “like new” condition (i.e. no chipping or surface variations and with adequate surface friction)</li> <li>Ability to use standard timing systems</li> <li>25 volunteers minimum over the event</li> </ul>
<b>Para-Climbing National Championships</b>	Senior Women Senior Men All sport classes with IFSC Merging System	<i>Para-Climbing Format</i> <ul style="list-style-type: none"> <li>Qualifiers – IFSC Format – 2 routes per sport class, possibility to “stack” routes</li> <li>Final – On-sight – 1 route per sport class</li> </ul>	<i>Para-Climbing Requirements</i> <ul style="list-style-type: none"> <li>Facility must be wheelchair accessible from the parking lot to the climbing wall</li> <li>Minimum 12m wall height<sup>5</sup></li> <li>Must be able to accommodate a minimum of 6 top rope routes</li> <li>Walls must have a variety of angles, to a maximum of 30 degrees overhang</li> <li>Inventory of holds need to include a large quantity of positive holds and volumes</li> <li>Ropes at least 50m in length (due to double rope belay system)</li> <li>Isolation Zone required for Finals</li> <li>40 volunteers minimum over the event</li> </ul>



<b>Senior Boulder National Championships</b>	Senior Women Senior Men	<b>Boulder Format</b> <ul style="list-style-type: none"> <li>Qualifiers – <a href="#">IFSC Flash format</a> (5 on 5 off). 6 Problems</li> <li>Semi-Finals - 5 on 5 off w/ isolation. 4 Problems</li> <li>Finals - World Cup format, 4 minutes. 4 Problems</li> </ul>	<b>Boulder Requirements</b> <ul style="list-style-type: none"> <li>Minimum 40m linear wall space with independent fall zones allowing 12 boulders to run simultaneously<sup>5</sup></li> <li>Minimum 3m wall height</li> <li>Isolation Zone required for Semis and Finals</li> <li>50 volunteers minimum over the event</li> </ul>
<b>Senior Lead National Championships</b>	Senior Women Senior Men	<b>Lead Format</b> <ul style="list-style-type: none"> <li>2 Qualifiers - Flash Format</li> <li>1 Semi-Final - On-sight</li> <li>1 Final - On-sight</li> </ul>	<b>Lead Requirements</b> <ul style="list-style-type: none"> <li>Must be able to accommodate 4 simultaneous individual lead routes</li> <li>Isolation Zone required for Semis and Finals</li> <li>Walls should be at least 12m in height<sup>6</sup></li> <li>Access to two actuating boom or scissor lifts in the gym for event preparation and setting</li> <li>50 volunteers minimum over the event</li> </ul>
<b>Youth Boulder Regional Events</b>	Youth A Women Youth A Men Youth B Women Youth B Men Youth C Women Youth C Men	<b>Boulder Format</b> <ul style="list-style-type: none"> <li>Qualifiers – <a href="#">IFSC Flash format</a> (5 on 5 off). 6 Problems</li> <li>Finals - World Cup format, 4 minutes. 4 Problems</li> </ul> <b>Youth C Format</b> <ul style="list-style-type: none"> <li>Scramble 6 problems</li> </ul>	<b>Boulder Requirements</b> <ul style="list-style-type: none"> <li>Minimum 50m linear wall space with independent fall zones allowing 18 boulders to run simultaneously<sup>7</sup></li> <li>Isolation Zone required for Finals</li> <li>75 volunteers minimum over the event</li> </ul>
<b>Youth Boulder National Championships</b>	Junior Women Junior Men Youth A Women Youth A Men Youth B Women Youth B Men	<b>Boulder Format</b> <ul style="list-style-type: none"> <li>Qualifiers – <a href="#">IFSC Flash format</a> (5 on 5 off). 6 Problems</li> <li>Semi-Finals - 5 on 5 off isolation. 4 Problems</li> <li>Finals - World Cup format, 4 minutes. 4 Problems</li> </ul>	<b>Boulder Requirements</b> <ul style="list-style-type: none"> <li>Minimum 50m linear wall space with independent fall zones allowing 18 boulders to run simultaneously<sup>8</sup></li> <li>Isolation Zone required for Finals</li> <li>75 volunteers minimum over the event</li> </ul>

<sup>5</sup> Walls with a minimum of 30m linear wall space with independent fall zones allowing 10 boulders to run simultaneously are still eligible, but preference will be given to facilities with at least 40m linear walls.

<sup>6</sup> Walls under 12m are still eligible, but preference will be given to facilities with walls at least 12m in height.

<sup>7</sup> Walls with less than 50m linear wall space but still with independent fall zones allowing 18 boulders to run simultaneously are still eligible.

<sup>8</sup> Walls with less than 50m linear wall space but still with independent fall zones allowing 18 boulders to run simultaneously are still eligible.



<b>Youth Lead National Championships</b>	Junior Women Junior Men Youth A Women Youth A Men Youth B Women Youth B Men	<i>Lead Format</i> <ul style="list-style-type: none"> <li>● 2 Qualifiers - Flash Format</li> <li>● 1 Semi-Final - On-sight</li> <li>● 1 Final - On-sight</li> </ul>	<i>Lead Requirements</i> <ul style="list-style-type: none"> <li>● Must be able to accommodate 6 lead routes running simultaneously</li> <li>● Minimum 12m wall height<sup>9</sup></li> <li>● Access to two actuating boom or scissor lifts in the gym for event preparation and setting</li> <li>● 75 volunteers minimum over the event</li> </ul>
------------------------------------------	--------------------------------------------------------------------------------------------	---------------------------------------------------------------------------------------------------------------------------------------------------------------------	----------------------------------------------------------------------------------------------------------------------------------------------------------------------------------------------------------------------------------------------------------------------------------------------------------------------------------------------------

### **CO-HOSTING**

If an interested facility doesn't meet the above requirements, CEC will allow joint bids with two facilities in reasonable proximity. Facilities proposing a joint bid should explain under which circumstances the event would run, understanding challenges that may arise with this type of setup.

---

<sup>9</sup> Walls under 12m are still eligible, but preference will be given to facilities with walls at least 12m in height.



## HOSTING REQUIREMENTS - VENUE REQUIREMENTS

---

### **Field of Play**

The Field of Play (FOP) is the area for the competition itself, plus the surrounding support areas, separated by a physical barrier from the other areas. The award ceremonies can also be run on the FOP. **A FOP and wall design shall be included in the bid proposal.**

The FOP is composed of the following zones:

- The Climbing Zone, which contains the climbing wall and floor covered by safety mats. The Climbing Zone shall extend a reasonable distance out from the wall to allow for athletes to fall safely or be brought down on belay.
- The Transit Zone, which is where athletes perform their final preparation prior to starting their round. The Transit Zone connects the Climbing Zone to the Isolation Zone, and must be visually separated from each of those two zones. Athletes (and belayers for lead) remain in the Transit Zone until called upon to enter the Climbing Zone.
- The Jury Zone, which is where the judges are located during the climbing round. The Jury Zone shall be immediately in front of and have an unobstructed view of the Climbing Zone.
- The Post- Climb Zone, which is an area for athletes who have finished their round to wait visible to the audience with restricted access restricted to athletes who have finished their performance and accredited persons (Officials, Media, Coaches).

### **Back of House**

The Back of House (BOH) comprises those areas that are typically off-limits and not visible to the general public during the event. The BOH is composed of the following zones:

- The Isolation Zone, which is a restricted area for athletes and team officials to warm-up and prepare for competition. It may be localized outside of the event venue and should consist of a general area for relaxation and refreshment and an area that includes a warm-up wall. The Isolation Zone must not be in view of the audience. Athletes must be able to move directly from the Isolation Area to the transit Zone.
- The Setting Zone, which is where holds and other setting equipment shall be stored. The Setting Zone should offer a large amount of storage space and access shall be managed by the Setting team.
- The Medical Zone, which is where first-aid and (for national championships only) anti-doping activities shall be performed. The Medical Zone shall have a space to set up a table and chairs for medical personnel. If anti-doping is required, the Medical Zone must have access to a private washroom or stall.
- The CEC Zone, which shall be a private room for CEC Officials or other CEC Representatives.

### **Front of House**

The Front of House (FOH) comprises those areas that are typically accessible by the general public. The FOH must be separated from the Field of Play and BOH by a physical barrier. Depending on the space available in the Host Facility, the FOH may include VIP areas for staff, event organizers, CEC Board members, sponsor representatives, etc. distinct from those areas for the general public.

Recommended, but not required, elements for the FOH include:

- A sound system to address the audience and play music;
  - Music must be approved by the Technical Delegate;
- A light system that can be directed at the climbing wall;



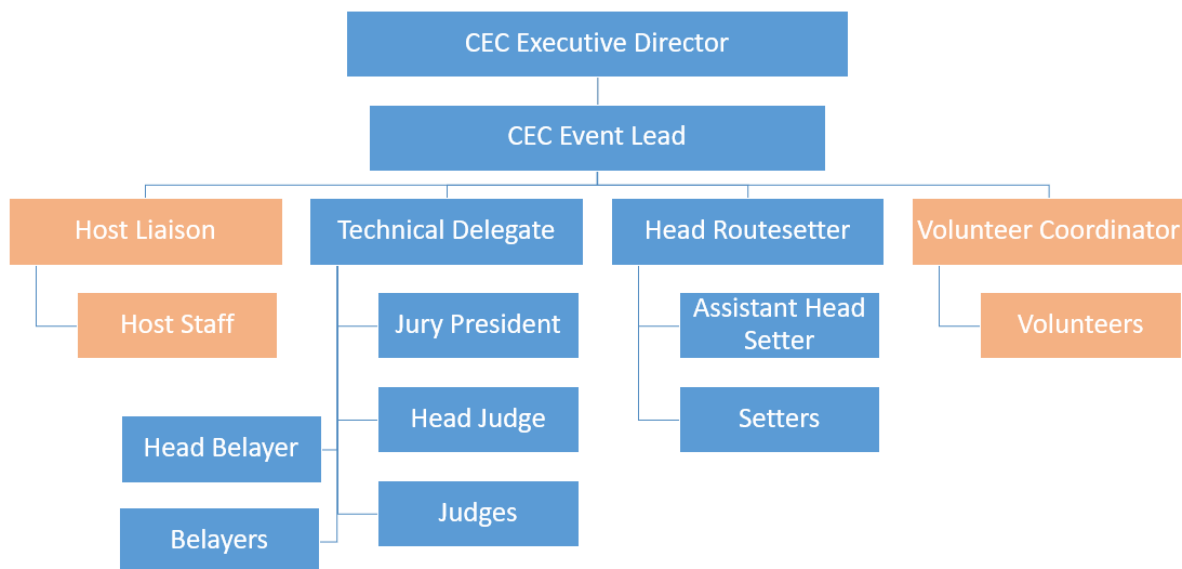
- Light systems must be approved by the Technical Delegate to ensure athletes are provided with sufficient lighting;
- A video screen or projector of sufficient size as to display rankings, results, or other information;
  - CEC will provide the software to display the above;
- Personal protective equipment available upon request, including earplugs, masks, face shields, gloves, etc.

## CEC & HOST RESPONSIBILITIES

---

CEC is responsible for and in charge of all CEC events. CEC will work in conjunction with the Hosting Facility to deliver the most successful event possible for the athletes. CEC asks that the Host Facility should select 1) a Host Liaison and 2) a Volunteer Coordinator to work with the CEC Event Lead.

### Organizational Chart



### Responsibilities

Both parties will sign a Hosting Agreement upon which they agree to the following objectives:

- Provide athletes a fair but challenging FOP
- Allow the Host Gym and local climbing community to benefit from co-hosting the Event
- Allow the CEC to benefit from co-hosting the Event
- Providing spectators with an inspiring and high-quality sport show
- Enable broadcasters and media to promote climbing via producing, film, images and reports
- Allow Sponsors to benefit from supporting climbing, the Parties and the Event, as applicable
- Promote competition climbing in Canada

### **Specifically, CEC is responsible for:**

- Developing, in collaboration with the Event Host, the event budget
- Creating the event schedule
- Researching and applying for local grants and sponsorships



- Creating an event webpage containing the following logistic information:
  - Travel information – closest airport, directions by car and transit
  - Partner accommodations
  - Event organizer and CEC Official's names and contact details
  - Location of nearest hospital
  - Link to waiver
  - Parking instructions
  - Food recommendations
  - Preliminary Schedule
- Designing all branding for the event, including badges and signage
- Hiring Event Officials, including:
  - Technical Delegate, Jury President, and Head Judge
  - Head Routesetter, Assistant Head Setter, and Setters
  - Head Belay (for lead and speed)
  - Livestream commentators
- Covering cost of travel, accommodation, honorarium, and per diem for Event Officials
- Collecting registration and payment
- Providing and setting up the live scoring system
- Providing and setting up the volunteer management system
- Providing a livestream of the event, when applicable
- Holding a training session for volunteers such as judges and belayers
- Hosting the technical meeting before the competition
- Providing medals, trophies, and cash prizes for every eligible category
- Providing a land acknowledgement script

**Specifically, the Event Host is responsible for:**

- Providing a Host Liaison to work with CEC
- Providing a Volunteer Coordinator to support recruitment, training, and scheduling of volunteers
- Supporting volunteer recruitment efforts:
  - Belayers (2 per lead route and 1 per top rope route)
  - Judges (2-3 per boulder problems, 3-4 per lead route)
  - Isolation Zone Managers
  - Runners
  - Check In
  - Others as determined
- Providing a strong internet WIFI connection for the Field of Play (separate from the public WIFI connection)
- Providing exclusive access to a printer for the duration of the event
- Providing food for volunteers, covered within the Event Budget
- Providing first aid personnel as directed by CEC, covered within the Event Budget
- Hiring a Master of Ceremony for the Finals and award ceremonies, covered within the Event Budget
- Provide a podium and backdrop for the award ceremonies



## FINANCIAL STRUCTURE OF CEC EVENTS

---

CEC will work with Event Hosts to develop the **Event Budget**. This Budget will incorporate expenses related to hosting the event, such as:

- Setting team
  - Honorarium for Head Routesetter, Assistant Head Routesetter, and Setters (as needed)
  - Contribution for forerunners
  - Travel and accommodation
  - Per diem
- Officials team
  - Honorarium for Technical Delegate, Jury President, Head Belay, and Head Judge
  - Travel and accommodation
  - Per diem
- Competition equipment
  - Countdown clocks, cameras, tablets
  - Live Result System
  - Registration system and volunteer management software
  - Signage, athlete and volunteer badges, volunteer shirts
  - Medals, trophies, and cash prizes
- Livestream
  - Livestream contract fee
  - Honorarium for commentators
  - Travel, and accommodation, and per diem for commentators
- Marketing
  - Marketing team, including an event photographer

### **CEC will provide Event Hosts with the following financial contributions:**

- Facility rental fee, as agreed by both parties
- Fixed amount for lift rentals (if needed)
- Fixed amount for the following expenses:
  - Honorarium for Host Liaison
  - Honorarium for Volunteer Coordinator
  - Honorarium for Master of Ceremony
  - Food for volunteers
  - First aid and physiotherapy services
  - Contribution toward photography, video or promotional materials

### **CEC will not provide financial contributions for the following:**

- Staffing the facility for all duration of the event
- Space for spectators, including bleachers if required
- Table, chairs, and extension cords to supply for the event
- Security barrier between the Field of Play and Front of House
- Additional photographers and Media Team
- Event Hosts may sell tickets and food and drinks, the proceeds of which shall be kept by the Event Host.



## BID REQUIREMENTS

---

All bids must be submitted by email as an attached PDF document to [info@climbingcanada.ca](mailto:info@climbingcanada.ca). Bids must contain, at a minimum, the following sections:

1. Name and contact information for
  - a. Any individuals involved with the bid itself
  - b. Facility
  - c. The proposed Host Liaison
  - d. The proposed Volunteer Coordinator
2. Proposed Event(s) and preferred date(s)
3. A complete description of the host facility and how the facility satisfies the hosting requirements
  - a. Competition Requirements
  - b. Field of Play
  - c. Wall Design
  - d. Other Areas
  - e. Public Areas
4. Description of the host city in terms of accessibility, hospitality, volunteer capability, etc.
5. Outline of medical services available, including distance to the nearest hospital.
6. List of potential sponsors and/or grants available if the event is held in the proposed city/facility.
7. Letter of support from Provincial or Territorial Sport Organization (PTSO) - optional.
8. Letter of support from Sport Tourism Organizations and/or Government leaders - optional.

## BID EVALUATION CRITERIA

---

CEC will evaluate bids on the following criteria, ranked by priority:

1. Infrastructure assets
  - a. Climbing facilities
  - b. Hold/volume inventory
  - c. Accommodation options
  - d. Food & Beverage Services
  - e. Transportation
  - f. Livestream / Broadcast Capacity
  - g. Medical Services
2. Public sector support
  - a. Government support
  - b. Sport tourism support
  - c. Ability to secure hosting grants
3. Community support
  - a. PTSO support
  - b. Club support
  - c. Ability to recruit local volunteers
4. Management and event expertise
  - a. Leadership of local team



- b. Experience in event hosting
- 5. Financial considerations
  - a. Financial suitability
  - b. Marketability
  - c. Ability to secure local sponsors
- 6. Legacy
  - a. Infrastructure & equipment
  - b. Sport promotion